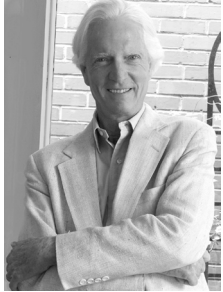




CAPITAL MEDICAL
SOCIETY

Cap Scan

A PUBLICATION OF THE CAPITAL MEDICAL SOCIETY



Afflicted Reason

By Dr. Charles Moore

You may...or more reasonably not... notice that this is not the April Fool's issue. It is not full of wit and bits of nonsense that for many years were contrived by our cast of character-writers, Chuck Manning, Frank Skilling, Charlie Williams, David Guttman, Scott Sellinger, Ken Wasson, et al, nor to leave out Rosalie and Shannon. All things pass, and suddenly seem to have no place, like the oft-cited "buggy whip." It was fun, as they say, while it lasted.

Comes the question: how does one know when "the time is up?" It is

In This Issue

"Announcing New Member Specific Benefits" by Nancy Loeffler, M.D.3
Medical Centers and Their Brandings ..7
Lunch & Learn8

Mark Your Calendars!

April 16, 2013, 6:00 pm

**CMS Membership & CME Meeting
"Influenza at the Human-Animal
Interface, a Source of Epidemic and
Pandemic Influenza"**

Carina Blackmore, MS Vet. Med., Ph.D.
State Public Health Veterinarian, State
Environmental Epidemiologist
In association with the Leon County
Veterinary Association
Maguire Center for Lifelong Learning at
Westminster Oaks

May 21, 2013, 6:00 pm

**CMS Membership & CME Meeting
"Eating Disorders: From Latency to
Geriatrics"**

Mathew Nguyen, M.D. & Amelia A.
Davis, M.D., UF & Shands Eating
Disorder Recovery Center
Maguire Center for Lifelong Learning at
Westminster Oaks

difficult to say. I am reminded of that marvelous passage in the opening pages of Don Quixote wherein is described how that gentleman of La Mancha, his brains having become addled with too much reading of famous knights of yore, was pondering his own ambitions to become a knight-errant, save damsels from distress, and cleave giants in twain with his mighty sword. He loved a good logodaedalian passage, soaring to flowery heights, never mind melting in the sun to come crashing down. Struggling, perhaps, to make sense of himself, and perhaps life itself, he spent long hours, rendering himself gaunt and forlorn, attempting to decipher such linguistic niceties as "the reason of the unreason with which my reason is afflicted so weakens my reason that with reason I murmur at your beauty." It is, of course, the kind of thing one would say to any damsel, whether in distress or not.

It is also what has happened to the April Fool's issue. With reason, reason has become afflicted, and resolve to carry on in that vein accordingly suffers. I should be, of course, more specific.

As usual, the Publications Committee of *Cap Scan* was once again invited into discreet conclave to assemble yet another April Fool's issue. This event, run in the fashion of any "think-tank," constitutes our only meeting of the year, the thought being only that of nonsense relating to our medical community. Who is to write what is parceled out, and duly written up in good time to provide a minor laugh on April first. We do take some pride, by the way, in the fact that certain of our articles, ridiculous though they were, have prompted calls

from even some of our most enlightened members to ask if, in fact, Mr. O'Bryant was leaving to become the CEO of Nome Alaska General, and if Mr. Cook was indeed building his personal two-story penthouse on top of Capital Regional. And so it went, not bad fun, and the times seemed right for what we wrote. Our medical society generously provided sub sandwiches, pizza and diet cokes, fertilizing the imagination. A good time was had by all, and nothing serious was ever discussed, as must be done in so many other benighted committees.

And so, once again this year, the date was set. All the usual suspects were invited. And then, as it proved, no one could come, including myself, the veritable chairman. It is difficult to know why, so suddenly, no one was interested. There is an unreason that reason knoweth not, quoth I to myself, wishing only that I might not have misplaced my old suit of armor and that rusty, half-cracked lance I inherited from my grandfather. I looked at Rosalie, faithful to our cause over these many years, and said "enough is enough, a new age is upon us of non-nonsense." She looked at me, her eyes brimming with pathos, very damsel like, and said "you're right."

And so: onwards and upwards! But still, having fooled with this publication for many years, I thought I might just try to think why a moment comes when it, at least regarding the April Fool's issue, no longer possesses "the moment." First of all I thought that maybe the Publications Committee was simply tired, conceivably even grown too old

Continued on page 5



CAPITAL MEDICAL SOCIETY

*Our Mission: To promote the practice of
medicine for the ultimate benefit of
the patient.*

(850) 877-9018 | Fax (850) 878-0218

www.capmed.org

Board of Governors

Nancy Loeffler, M.D., President

Alfredo Paredes, M.D., President Elect

**Joshua Somersset, M.D., Secretary/
Treasurer**

**Hugh VanLandingham, M.D.,
Immediate Past-President**

Robert Chapman, M.D.

Garrett Chumney, M.D.

Kristin Hanson, M.D., Resident

Tracey Hellgren, M.D.

Marc Inglese, M.D.

Vikki McKinnie, M.D.

Hector Mejia, M.D.

Francisco Mora, M.D., Resident

Margaret Havens Neal, M.D.

J. Daniell Rackley, M.D.

**Mara Rumana, CMS Alliance
President**

Timothy Sweeney, M.D.

Sue Conte, Executive Director



Publications Committee

**Charles E. Moore, M.D.,
Editor/Chairman**

Shannon Boyle, Managing Editor

David Guttman, M.D.

Charles Manning, M.D.

Scott Sellinger, M.D.

Frank Skilling, M.D.

Ken Wasson, M.D.

Charles "Pedro" Williams, M.D.

Cap Scan is published during the first week of each month and is the official publication of the Capital Medical Society. Advertising in Cap Scan does not imply approval or endorsement by the Capital Medical Society. The opinions expressed are those of the individual authors and do not necessarily reflect the official policies of the Capital Medical Society. If you are a member of the Capital Medical Society and would like a copy of the Minutes from the Board of Governors Meeting, please call the CMS office. Thank you.

Capital Medical Society 2013 Meetings Calendar

April 16, 2013

CMS Membership & CME Meeting
"Influenza at the Human-Animal
Interface, a Source of Epidemic and
Pandemic Influenza"

Carina Blackmore, MS Vet. Med., Ph.D.
State Public Health Veterinarian, State
Environmental Epidemiologist
In association with the Leon County
Veterinary Association

6:00 pm

Maguire Center for Lifelong Learning
at Westminster Oaks

May 21, 2013

CMS Membership & CME Meeting
"Eating Disorders: From Latency to
Geriatrics"

Mathew Nguyen, M.D. & Amelia A.
Davis, M.D., UF & Shands Eating
Disorder Recovery Center

6:00 pm

Maguire Center for Lifelong Learning
at Westminster Oaks

June 6, 2013

CMS Doctor/Son Banquet
For physicians and their sons
6:00 pm

Location: Civic Center

September 17, 2013

October 15, 2013

November 19, 2013

CMS Membership & CME
Meeting

6:00 pm

Location: TBA

December 5, 2013

CMS Foundation *Holiday Auction*

6:30 pm

Location: TBA



XPRESS
PRINTING • COPYING • MAILING

Office **850.222.9777**
Fax **850.222.3291**

- DOH approved vendor for counterfeit proof prescription pads and blanks.
- Meet all HIPAA compliance and obligations for your printing requirements.
- Medical forms and superbills printer to health providers.

Free Delivery and Pickup • Your One Stop Printing & Mailing Solution

927 North Monroe Street • Tallahassee, Florida 32303
sales@iprintquick.com • www.iprintquick.com

Announcing New Member Specific Benefits

By Nancy Loeffler, M.D.



This month we are pleased to roll-out two new benefits offered specifically to members of Capital Medical Society.

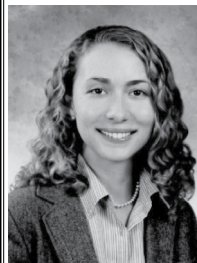
The Florida Healthcare Law Firm is offering free legal documents and discounted audiovisual presentations on timely topics. Free legal documents include confidentiality agreement, asset purchase form, due diligence, employment compensation options and more. The discounted presentations are designed to provide practical advice on the spot and not be a tutorial on the law. They also have products that help doctors comply with

some of the laws that pertain to their practices. The Capital Medical Services Corporation reviewed a sampling of the materials and found them to be of high quality. Visit them online at www.FloridaHealthcareLawFirm.com.

In addition, Florida Doctors Insurance Company (FLDIC) has partnered with CMS to facilitate the ability of our members to purchase professional liability insurance at competitive rates from FLDIC, including a 10% discount for being a member of CMS. Contact Dennis Wilson at dwilson@fldic.com.

Stay tuned for more announcements as your Board of Governors continues to find ways to add value to your membership.

The Capital Medical Society is pleased to welcome the following new member:



Raquel M. Mitchell, M.D.
Medical School: University of Miami
Internship/Residency: Carolinas Medical

Center – Levine Children's Hospital, Charlotte, NC
Specialty: Pediatrics
Practice: Tallahassee Pediatrics/TPCA, 1205 Marion Avenue

Discounts Program: Capital Medical Society Members

Florida Doctors Insurance Company, is now a preferred partner for the Capital Medical Society.
That translates to savings for you.



Capital Medical Society Members receive a 10% discount. With our vast network of agents, expertise and knowledge of Florida law, FLDIC brings more value and savings to our clients.

Contact your agent or call Dennis Wilson today at 1-800-FLA-DOCS to see what other discounts apply to you.

FLDIC is the endorsed carrier for FOMA, FSIPP and numerous other societies. Get a quote or read our medical articles at www.fldic.com.



Capital Medical Society Members,

We Invite You to Celebrate the Grand Opening of Our New Online Store!

The Florida Healthcare Law Firm is proud to announce our partnership with CMS.
Visit our innovative new resource center today, accessible through
www.FloridaHealthcareLawFirm.com or by www.NationalHealthcareLawFirm.com/store
where you'll find:

FREE legal documents available for instant download covering everything from
Confidentiality Agreements to Space Leases!

AND audio/visual presentations are also available for purchase on the following topics:

- ✓ Buying a Medical Practice
- ✓ Selling a Medical Practice
- ✓ How to Hire a Physician
- ✓ Physicians Getting Employed
- ✓ Florida's Prompt Payment Laws
- ✓ PIP Modifications & Regulations
- ✓ MD/DC Business Arrangements



**Members of the Capital Medical
Society will receive 25% off all
purchases made in the online store.
Use coupon code: CMS25**



Visit us online at www.FloridaHealthcareLawFirm.com

Call Toll Free at 888-455-7702

Email Jeff Cohen jcohen@floridahealthcarelawfirm.com

Afflicted Reason ...

Continued from page 1

and divorced from what had once seemed pertinent to a touch of mirth. I guessed at the ages of the committee members, added them up, divided by their number, and was astonished to arrive at a figure handsomely into the sixties. No one was, happily, gaunt or addled of mind, but we were actually older than the Knight of La Mancha who, Cervantes tells us, was "bordering on fifty." Really! Don't expect us to appeal to the humor of a medical community whose average age probably hovers around 40.

So where are we with this? I'll tell you right now. The very distinguished, but modestly maturing Publications Committee needs a vital new membership. In the last *Cap Scan* issue, Dr. Nancy Loeffler, our brilliant new President, outlined sundry goals for her forthcoming tenure, one of which was to "improve our membership's engagement with CMS." It has always been my thought that corollary to our new website, *Cap Scan* could, and should, retain a place for sharing our thoughts. It has been, as I now see it, my deficiency as its editor that I have not directed more energy to encouraging, or even tricking, the occasional one of you into writing of something you know, of course without reversion to self-advertisement, recommendations to violence against the government, friends and colleagues, or use of the more infamous four letter words.

And so, no longer "above" trickery, let me hope and suggest to Dr. Loeffler that she might write for us a bit of something about whatever SHE thinks, as our leader: perhaps an update on her agenda every other month. She can knock it off in half an hour. And how about now and again Drs. Hellgren and VanLandingham: after all, they know what goes on. And then, beyond these, there are others with wonderful thoughts to share and bounce about. Let me hazard to name

a few: Drs. Niharika Suchak, Ken Kato, Maribel Lockwood, Christie Sain, Kristin Hanson, Randa Perkins, Scott Tetreault, David Bellamy, David Smith, and Jonathan Appelbaum. Why them? Well, of course, "Editor's Prerogative!" But anyone else, as well, who would like to practice a little syntax.


Finally, not having had our usual April Fool's annual meeting, consider this an invitation to share pizza, subs, and a diet coke with an upcoming perhaps even lame duck membership of the Publications Committee. Rosalie and Shannon will hostess, and I will make a very brief speech. Sue Conte will look on benignly. You will know the time and date by grapevine or Rosalie. It is so easy to write for *Cap Scan*, you know, because you need not feel intimidated by either getting a grade or suffering over the thought that you might even be read; but by doing so you will gain the benefit of sifting your thoughts and even organizing them a little. And if someone does read you, you will have helped to bring our medical community all the more together.

This is, after all, the only committee you will ever sit on which presents itself as a party. Never mind thinking that such a goal is mere "Quixoticism." Let me invite you accordingly, through the medium of this prestigious journal, to tilt at windmills, and maybe, if we can get Shannon and Rosalie to comply by looking distressed, practice saving fair damsels from fates "worse than death," and with your words as our sword cleave giants in twain.

Join us with your thoughts. Let *Cap Scan* welcome your presence. Come have a diet coke and a slice of pizza; and think of it as champagne and pate de fois gras, exactly as Quixote would.

Are you interested in writing an article for *Cap Scan*? Please contact Dr. Charles Moore at cmoore5186@aol.com and Shannon Boyle at sboyle@capmed.org. All articles submitted will be reviewed by your peers prior to publishing.

YOUR Healthcare Credit Union

**Used Car Sale at
Main Office Branch!**


Browse Our Lot of Over
75 Quality Pre-Owned Vehicles
From **April 12 - 14, 2013**


Rates as low as
2.99%APR* for up to 60 months

- **\$50 Visa® Gift Card on Pre-Approved Loans****
- **Loan Officers on Duty Each Day**
- **Food & Beverages**

**Improving the Financial Life of Each
Member is our Priority and our Pleasure**

Call: 850.402.5301 or Apply Online: www.tmhfcu.org


Your savings federally insured to at least \$250,000 and backed by full faith and credit of the United States Government, National Credit Union Administration, A U.S. Government Agency


We Do Business in Accordance With the Federal Housing Law and the Equal Credit Opportunity Act

*APR - Annual Percentage Rate. Available to qualified borrowers only. Other restrictions may apply. Rates available only for vehicles on lot. **Visa® Gift cards will be dispersed for those pre-approved loans between April 1 - 11, 2013 once loan is booked.

A Year Goes Incredibly Fast!

By Sue Conte, CMS Executive Director



A year at the helm of your medical society has gone by faster than I ever imagined! It seems like only yesterday that I walked down what has become my favorite linoleum hallway for the first time and entered the room where Mollie Hill and Karen Wendland had worked their magic for years and years, winning the admiration and respect of the entire medical community. I sat there on my first day wondering “What, exactly, did they do? How does this thing really work?” And, so began my long list of questions and my initiation into every mission, goal, budget, committee meeting and event for each of three corporations. I was expertly guided by our President, Dr. Hugh VanLandingham, immediate past President, Dr. Tracey Hellgren, the Foundation President, Dr. John Mahoney and CMS Services Corporation President, Dr. Frank Skilling. They all found time in their busy schedules to coach and mentor me.

What have I learned, you might ask? (1) Rosalie knows every doctor, their spouse, children and grandchildren – as well as a good number of their pets. She loves taking calls from you and pestering you with e-mails laced with humor, and she can coordinate a meeting, keep an RSVP list, create name-tags and put together all the requirements for obtaining CME credit for a meeting – all at once; (2) Jane definitely knows the finances and can coordinate complex financial transfers, do budgets, payroll and taxes – while managing the CMS Services discounted pager sales and service. She provides a level of service that makes the pager business profitable for the Capital Medical Services Corporation; (3) Shannon is the ‘eagle eye’ editor for *Cap Scan* – keeping it accurate and on-schedule (no small task) all while creating a bi-monthly e-newsletter and coordinating a huge number of details for special events. The three of these staff members are the reason your medical society did not skip a beat during this past year. They continued to do their jobs and serve our members.

And there are a few new things we are doing for members of the medical society –

Our Web site has a “Find a Doctor” feature and each physician is listed there with their own profile “page” including address, phone, and link to the practice web site.

Our Home page provides you with up-to-date information on CME meetings and an easy link to register. It also links you to driving directions to the venue.

Our App is an easy way to link your smart phone to our web site information, register for a meeting, call/e-mail us or to read the CMS e-news “CapMed Today”.

And, our President, Dr. Nancy Loeffler announces new benefits for you in this issue of *Cap Scan*.

Along with your Board of Governors, we continue to monitor issues of interest to you and explore new ways of expanding the benefits of your membership. Please let us hear your suggestions and comments. After all, your input and involvement are the engines that drive all the activities of your medical society.

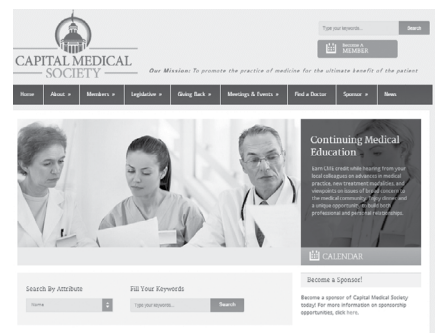
Have you checked out the new CMS website?

Go to www.capmed.org and look around!

- Click on “Find a Doctor” and search for your name. Make sure your information is correct. If it is not, give us a call at 877-9018.
- Click on “Calendar” to see all of our upcoming meetings/events.

We want to hear your feedback. Tell us how you feel about the new look and make suggestions for improvements.

The notices on the home page will change periodically, so check back or make CapMed.org your home page so you will always see our updates first!



Medical Centers and their Brandings

Many of our practices are searching for ways to maximize incomes and minimize expenses, and many have noticed the solution found by that other underpaid and underappreciated segment of society- professional athletes and sports venues. Most of us have heard of the Mercedes Superdome in New Orleans, Busch Stadium in St. Louis, and the Amway Center in Orlando, but did you know that there are over three hundred corporately named sports venues in the world? Some of the more notable include The Hershey Center, in Mississauga, Ontario, The Uniprix Stadium in Montreal, Quebec, The Red Bull Arena in Leipzig, Germany, the Kleenex Stadium, a baseball stadium in Sendai, Japan, and the Hunky Dorys Park, a soccer stadium in Drogheda, Scotland (FYI - Hunky Dorys are crisps or potato chips- thank you Google). For real fitness enthusiasts and downright chutzpah (i.e. nerve) it's hard to beat the Kit Kat Crescent, a football stadium in York, the Dunkin Donuts Center in Rhode Island or the KFC Yum! Center in Kentucky, both multipurpose indoor arenas and fitness centers. My all time favorite award, however, goes to the Peoples Natural Gas Field, a baseball arena in Altoona, Pennsylvania.

Not to be left out of the largest of our nation's corporate Santa Clauses, many of our medical colleagues and institutions have already jumped on the band wagon, and have branded themselves and marched proudly into the 21st century. A sampling is provided below.

**THE HOME DEPOT
ERECTILE DYSFUNCTION
CLINIC:**
"You can do it, we can help."

**THE TOTAL CEREAL
NEONATAL CARE CENTER:**
"Today is the first day of the rest of your life."

**THE FEDEX EMERGENCY
DEPARTMENT:**
"When you absolutely, positively have to be there overnight."

**THE STATE FARM WOMEN'S
BIRTHING CENTER:**
"When you're in labor, State Farm is there."

**THE FOLGERS
ANESTHESIOLOGY
ASSOCIATES:**
"The best part of waking up is Folgers in your cup."

**THE VERIZON AUDIOLOGY
CENTER:**
"Can you hear me now?"

**THE PHILLIP MORRIS
PATHOLOGY ASSOCIATES:**
"Welcome to Marlboro country."

**THE LO'REAL PLASTIC
AND COSMETIC SURGERY
CENTER:**
"Because I'm worth it."

**THE AMERICAN AIRLINES
ALLERGY AND ASTHMA
CENTER:**
"Something special in the air."

**THE IRMA BOMBECK
ADOLESCENT BEHAVIOR
CENTER:**
"Anyone who has ever tried to raise teenagers understands why alligators eat their young."

**MOUNDS AND ALMOND JOY
PSYCHIATRY CENTER:**
"Sometimes you feel like a nut, sometimes you don't."

**THE DURACELL BATTERY
ENDOSCOPY CENTER:**
"The light at the end of the tunnel."

**THE KIT KAT ORTHOPEDIC
CLINIC:**
"Have a break, have a Kit Kat."

**THE DOW SCHOOL OF
PHARMACY:**
"Better living through chemistry."

**THE ALLSTATE SURGICAL
ASSOCIATES:**
"You're in good hands with Allstate."

**THE FORD TRUCK SLEEP
DISORDERS CLINIC:**
"The best never rest."

**THE UPS
GASTROENTEROLOGY
CLINIC:**
"What can Brown do for you."

**THE TIMEX CARDIAC CARE
UNIT:**
"Takes a licking and keeps on ticking."

**THE DELTA AIRLINES PAIN
MANAGEMENT CLINIC:**
"We love to fly and it shows."

The comments and opinions expressed in this column are solely those of the author. They do not necessarily convey the viewpoint of the author's spouse who disagreed with most of it, nor the opinions of the Hooters Cap Scan editorial board: "Delightfully tacky, yet unrefined".



CAPITAL MEDICAL
SOCIETY

Lunch & Learn

A service for all CMS member offices!

On February 20th, Diane Gaddis, CPHIMS, FHIMSS, CPHIE, President/CEO for The Center for the Advancement of Health IT (AHIT), gave an excellent program on "Stage 2 Meaningful Use". Ashley Sellers, April Zehms-Pons and Angie Anthony were also in attendance for AHIT. You can reach Ms. Gaddis at (727) 573-2422 or Diane@chcalliance.org.

Automated Medical Systems (AMS) sponsored the February 20th Lunch and Learn. AMS is the premier supplier of software and hardware systems for medical practices. Kevin Knutson, Michelle Mullis and Jill Jaunty were in attendance as representatives of AMS. You can reach Mr. Knutson, Vice President, at (229) 253-9526 ext. 1190 or kknutson@automedical.com.

This seminar was held at the Capital Health Plan on Governor's Square Blvd – and we thank them for providing this lovely venue.

Mark Your Calendar for the remaining Lunch and Learn seminars for Spring 2013

Time: 12 Noon to 1:30 pm (seminars start at 12:30 pm)

Place: CHP Auditorium, 2nd Floor - 1491 Governors Square Boulevard

\$10 per seminar, per person. For more information or to RSVP for the Lunch & Learn, call Rosalie Carlin at 877-9018.

April 17, 2013

Risk Management

Speaker: MAG Mutual – Carol Wischart, RN, BS, LHRM, CHPRM

A risk management plan should provide a method to review and continuously improve the quality of patient care provided by the medical office. The risk management plan should provide a mechanism for identification and control of risk exposure, improved patient safety and reduction of liability. This program will provide guidelines for the medical office practice that will help to reduce medical errors and poor patient outcomes and to determine opportunities for improvement before problems occur. It will provide various tools to effectively implement risk management activities within the medical office services.

Sponsor: PSS, Physicians Sales & Service, Steve Williams

May 15, 2013

Lawsuits, Audits, & Courtrooms...Oh My! Employment Law 13.0

Speaker: Bill Krizner, The Krizner Group

2013 means trouble for employers in the form of disgruntled employees, allegations of disparity, and costly wage & hour lawsuits. A head-in-the-sand approach will get you nowhere. There are always lurking landmines you need to watch out for, and the best defense is a good offense. The good news is that there are affirmative steps you can take to protect yourself. Don't miss this informative and highly entertaining keynote address as attorney Bill Krizner explains precisely why the stakes are so high for you right now, and how you can proactively minimize the risk within your Practice.

Sponsor: Florida Doctors Insurance Company



Representatives from The Center for the Advancement of Health IT at the February 20th Lunch & Learn: (l-r) Diane Gaddis, Ashley Sellers, April Zehms-Pons and Angie Anthony.



Representatives from Automated Medical Systems at the February 20th Lunch & Learn: (l-r) Kevin Knutson, Jill Jaunty and Michelle Mullis.

CAPITAL MEDICAL SOCIETY

Special Edition

LUNCH & LEARN

Additional Spring 2013 Lunch & Learn!
FREE to staff of CMS Members!
Space Limited to 50!

All About CE Broker

The Capital Medical Society is offering a special Lunch and Learn session for those staff in our member offices that assist physicians with their CME tracking and reporting for licensure renewal. The Department of Health, Division of Quality Assurance will now review continuing education records in the electronic tracking system, **CE Broker**, when physicians renew their license. We have arranged to have the Managing Director for CE Broker give a presentation on this new system. You will also learn about a potential offering for CMS Members to receive a discounted upgrade from the free basic account to a professional account for the low cost of \$12.00 per year. Come learn about this important new system and how it can work for your physicians.

Wednesday, April 10th at 12:00 Noon to 2:00 PM
Lunch available at Noon, program to begin at 12:30pm
Capital Health Plan, 1491 Governors Square Boulevard
2nd Floor Auditorium

Advance Registration Required - Limited to the first 50

Sponsored by Capital Regional Medical Group

Lunch provided

To register – email Rosalie Carlin at rcarlin@capmed.org
With your Name and Office Name
Your email will be confirmed, so please watch for confirmation!

Thank You!

How to Buy Dr. Williams' *More Simpler Times*

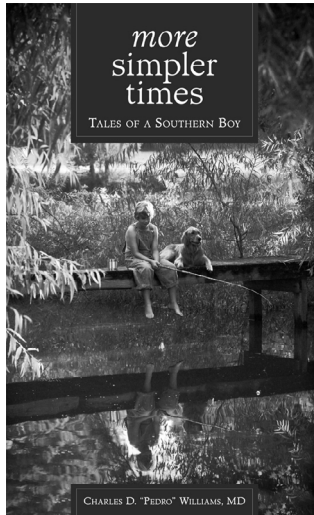
By Shannon Boyle

We are very grateful to Dr. Charles Williams that he has decided to donate to the *We Care Network*, proceeds from the sales of his new book and sequel, *More Simpler Times*.

The cost is \$20 per book.

You can buy copies of the book at:

- The CMS office – 1204 Miccosukee Road
- The Gift Shop at Capital Regional Medical Center
- The Gift Shop at Tallahassee Memorial Hospital
- Tallahassee Nurseries – 2911 Thomasville Road
- My Favorite Things – 1410 Market Street, B2



- Feathered Pony Boutique – 2522 Capital Circle NE, #3

Checks should be made out to: CMS Foundation. This means you are making a tax-deductible donation to your CMS Foundation.



Capital Medical Services
offers **member**
discounted pager
services through USA
Mobility.

Call or Email Jane
Chapman at CMS -
jchapman@capmed.org,
877-9018



3128 O'Brien Drive
\$469,000 MLS#231838

Killbuck home with soaring ceilings and tons of charm! 4 BD/3BA, 3,735 sqft. Complete with hardwood floors, tiles Florida room with wall to wall windows, custom cabinets and Corian countertops. Features include custom molding, 8' doors, irrigation system, over-sized garage, completely fenced backyard, wood blinds on windows, entertainment sound system, security system, and window seats in additional bedrooms, all throughout home. Large split level deck on the back of home, great for entertaining. Large Master suite with his/hers walk-in closets, spacious bath room with his/hers vanities, soaking tub and separate shower, and sitting area with access to the Florida room. Additional features: oversized 2 car garage and Durock Stucco exterior (with inspection report).



2903 Royal Isle Drive
\$825,000 MLS#232495

Absolutely stunning home located in Golden Eagle. 4BD/4.5BA, 5,416 sqft. This home is unique & is filled w/beautiful traditional spaces w/contemporary flare including columns, arches & many beautiful windows. Travertine floors, granite countertops, stainless appliances, summer kitchen w/large covered lanai & saltwater pool all overlooking a great lot that fronts a managed stormwater facility complete w/water fountain. Master suite has access to the pool & covered area. There is large recreation room & office upstairs that overlooks the pond and pool area. This Home is perfect for entertaining. Home is complete... w/ theater/rec rm, 10-14 ft ceilings thru-out home and irrigation system. Also there is a bonus room in the basement.



5996 Colonel Scott Drive
\$549,900 MLS#232251

Gorgeous one-owner home with lake view. 4BR/3BA, 3465 sqft. Extensive millwork incl. tray & coffered ceilings, rounded wall corners, columns, double crown molding, wainscoting & chair rails, exquisite flooring incl. Travertine tiles w/marble inlay & dark mahogany birch wood. Large kitchen w/GE Profile S.S. appliances, granite, tile backsplash, center island, bar seating & connecting breakfast rm. Fourth bedrm w/private bath entrance out to patio. Expansive master w/large seating area perfect office/nursery space, master bath w/jetted tub, seamless glass walk-in shower w/dual shower heads, his/hers vanities & walk-in closets. Tongue & groove pine ceiling, floor to ceiling sliding Anderson doors in Sunrm. Large Travertine patio overlooks stunning landscaped backyard. Security system features extensive video surveillance.

**Download the new Hill Spooner & Elliott app through your iPhone app store
to find out the latest information in Tallahassee real estate!**



2509 Barrington Circle Suite 102 Tallahassee, FL 32308 (850) 907-2051
Visit us at www.HillSpooner.com





SMILE!



Please note – photographs will be taken during all CMS events. The photographs may be used in CMS publications, on the CMS website, the CMS Facebook page, and/or other CMS posts.

If you wish that your photograph NOT be published or posted in any of the above manners, please notify CMS staff and complete and sign the “photo opt-out” form below.

Thank you!

CMS Photo Opt-Out Form

I DO NOT authorize the Capital Medical Society (CMS) to publish any photographs of myself in any CMS publications or internet sites.

I am opting out of any photographic displays until I notify the CMS otherwise.

PRINTED NAME:

SIGNATURE:

DATE:

CMS STAFF SIGNATURE:

DATE:

This original signed form will be placed in the CMS member's file, located at the CMS office:

1204 Miccosukee Road Tallahassee, FL 32308

NAVY MEDICAL PROGRAMS

ACTIVE DUTY OPPORTUNITIES AVAILABLE

- Competitive Pay
- Continuous Upward Mobility
- Up to \$400,000 Sign-on Bonus Depending on Specialty
- Additional Financial Incentives
- Full Medical and Dental Plans
- Advanced Training and Education Opportunities
- 30 day of Paid Vacation per Year
- Many More Benefits

* Contact your Navy Recruiter for more information

RESERVE OPPORTUNITIES AVAILABLE

- Part-time Service (One Weekend per Month, Two-Weeks per Year)
- Up to \$75,000 in Specialty Pay
- Up to \$50,000 in Loan Repayment
- Sign-on Bonuses available
- Practice Close to Your Home and Family w/ Flexible Service Options
- Montgomery GI Bill
- Tricare Reserve Select Health Insurance (\$49.62 for an individual; \$197.65 for a family)

ADDITIONAL ACTIVE DUTY AND RESERVE PRIVILEGES

- Servicemembers' group life insurance (SGLI) \$400,000 policy
 - Military Commissary and Navy Exchange Privileges
 - Access to Officer's Clubs Worldwide
 - Retirement Opportunities
 - VA Home Loans

US NAVY ACTIVE DUTY PROGRAMS



US NAVY RESERVES PROGRAMS



AMERICA'S
NAVY

A GLOBAL FORCE FOR GOOD.™

Please do not hesitate to contact one of our Navy Recruiters for additional information or questions:

Dana R. Potak, LT, USN
(904) 542-3320 x331
dana.potak@navy.mil

Dalia M. Lee, LT, NC, USN
(904) 509-6764
dalia.lee@navy.mil

HMC Tommy Childress (FMF)
(904) 334-1553
tommy.l.childress@navy.mil

Charlotte Smith, LTJG, NC, USN
(352) 258-4851
Charlotte.e.smith@navy.mil

Eric Robinson, LTJG, USN
(407) 301-2963
Eric.d.robinson@navy.mil

Donate to the CMS Foundation - We Thank Our Donors

The mission of the Capital Medical Society Foundation is to support the charitable efforts of physicians and others, increase access to healthcare, promote education and serve the community's health needs through innovative projects that are exemplary, affordable and dignified.

We thank the following person who made a donation to the CMS Foundation last month:

For the *We Care Network*

Connie Stoutamire – donation of a CPAP

Reasons to Donate

You can make a donation to the CMS Foundation in memory of someone who has passed away or you can make a donation in honor of someone, such as a fellow physician you hold in high esteem or has taken care of you or your family. CMS will send a letter to those you honor.

Endowment Funds

CMS Foundation has created three endowment funds in order to establish long-term financial stability to meet our mission. You can donate at any time to one of the CMS Foundation's Endowment Funds.

- 1. The General Endowment Fund**
- 2. The *We Care Network* Endowment Fund**
- 3. The Scholarship Endowment Fund**



Checks should be made out to the CMS Foundation and indicate on the "For line" which Fund you are donating to. Bring your check to the CMS Office or mail it: Capital Medical Society ~ 1204 Miccosukee Road ~ Tallahassee, FL 32308.



3963 Bobbin Brook

**4BR, 4.5 BA, POOL
home with 3,615 SF
& 24 x 48 Workshop
MLS# 231986
\$600,000**



9031 Winged Foot

**5BR, 4BA POOL
home with 3,626 SF
on the 9th Fairway
MLS# 232453
\$615,000**



7000 Duck Cove

**4BR, 3.5BA POOL
home with 3,803 SF
MLS# 220450
\$649,000**

VIRGINIA GLASS, CRS, 850-599-2645
Coldwell Banker Hartung & Noblin, Inc.
www.viriniaglass.com



Defending southeast physicians for more than 30 years



MagMutual®

Good medicine deserves the best defense

MagMutual.com

These agents are experts on the products and services MagMutual offers in Florida.

Staige Hoffman
MagMutual
800-741-0611

Don McMahon
McMahon & Hadder
850-484-7011

We invest our financial strength in you

- Consistent dividends*
- The best Florida attorneys
- Florida peer physician claims review
- Industry leading Patient Safety
- Owners Circle® rewards program
- Doctor2Doctor® peer support

Medical malpractice insurance for Florida physicians

*Dividend payments are declared at the discretion of the MAG Mutual Insurance Company Board of Directors. Since inception, MAG Mutual Insurance Company has distributed more than \$108 million in dividends to our policyholders. Insurance products and services are issued and underwritten by MAG Mutual Insurance Company and its affiliates.

3.49%

5-YEAR
FIXED

Think low interest rates aren't good for savings?
Think again — refinance your owner occupied building at 3.49% — SAVE on your bottom line.

No Prepayment penalty
15 & 20 year amortizations available

Call or stop by today to speak with one of our Commercial Bankers!

850.576.1182
www.talstatebank.com

**Tallahassee
State Bank**



New loan relationships only. Requires automatic debit of loan payment from a Tallahassee State Bank commercial account. Subject to credit approval and commercial deposit relationship. Please call one of our Commercial Bankers for more information. \$50,000 minimum loan amount. Different rates and terms may apply for loan amounts in excess of \$1,000,000. Offer also available for new purchases.

Tallahassee State Bank is a division of Synovus Bank. Synovus Bank, Member FDIC, is chartered in the state of Georgia and operates under multiple trade names across the Southeast. Divisions of Synovus Bank are not separately FDIC-insured banks. The FDIC coverage extended to deposit customers is that of one insured bank.

a division of **SYNOVUS® BANK**
MEMBER FDIC



CAPITAL MEDICAL SOCIETY FOUNDATION

We Care Network

Thank You!

To our CMS members and *We Care* partners who saw new patients for the *We Care Network* in February 2013.

Your generosity and support of the *We Care Network* makes a difference.

Physicians

Greg Albright, D.O.
Ricardo Ayala, M.D.
Robert Bradford, M.D.
David Burday, M.D.
Joseph Camps, M.D.
Ann Carr, M.D.
Michael Cavallaro, M.D.
Armand Cagnetta, Jr., M.D.
J. Daniel Davis, Jr., M.D.
Ray Dolly, M.D.
David Dolson, M.D.
David Durden, M.D.
Kerry Fike, M.D.
Sergio Ginaldi, M.D.
W. Harris Green, M.D.
Celeste Hart, M.D.
Muhanad Hasan, M.D.
Karl Hempel, M.D.
Okanta Jackson, M.D.
Roland Jones, M.D.
James Killius, M.D.
Amulya Konda, M.D.
Kathy Langston, M.D.
Matthew Lawson, M.D.
Albert Lee, M.D.
Maribel Lockwood, M.D.
Gordon Low, M.D.
Kurt Luhmann, M.D.
Charles Maitland, M.D.
Michael Mangan, M.D.
James True Martin, M.D.
Meredith McKinney, M.D.
Winston Ortiz, M.D.
Steven Ostrov, M.D.
Richard Palmer, M.D.
Alfredo Paredes, M.D.
Duncan Postma, M.D.
J. Daniell Rackley, M.D.
Jeffrey Rawlings, M.D.
James Renahan, M.D.
Stephen Richardson, M.D.
Adrian Roberts, M.D.
Andres Rodriguez, M.D.
Christopher Rumana, M.D.
Paul Sawyer, M.D.
Scott Sellinger, M.D.
Justin Simonds, M.D.
Hardeep Singh, M.D.
Joseph Soto, M.D.

Mary Swain, M.D.
Timothy Sweeney, M.D.
John Thabes, M.D.
Jean Paul Tran, M.D.
Ravi Ubriani, M.D.
William Yaakob, M.D.
Jessica Yoon, M.D.

Dentists

Eric Amundson, D.D.S.
William T. Baldock, D.D.S.
M. Darrh Bryant, D.M.D.
Susan Byrne, D.M.D.
Walter Colón, D.M.D.
William McFatter, D.D.S.
E. Lynn McLarty, D.D.S.
Jim McSoley, D.M.D.
Lawrence Pijut, D.M.D.
Frank Swerdzewski, D.D.S.
James Sykes, D.M.D.
Jay Walton, D.D.S.
Lawrence Weaver, D.D.S.
Ed Zapert, D.M.D.

Podiatrists

Bryan Spooner, D.P.M.

Facilities

Affordable Dentures
Anesthesiology Associates
Beachtown Denture Clinic
Capital Regional Medical Center
Desloge Home Oxygen
Leon County Dental Clinic
Pathology Associates
Radiology Associates
Seven Hills Surgery Center
Southeastern Surgery Center
Tallahassee Diagnostic Imaging
Tallahassee Endoscopy Center
Tallahassee Health Imaging
Tallahassee Memorial HealthCare
Tallahassee Orthopedic and

Sports Physical Therapy
Tallahassee Outpatient Surgery Center
TMH Family Medicine Residency Program
Women's Imaging Center

Please contact Rose Marie Worley at rworley@capmed.org or 201-0130 if you are a *We Care* volunteer and you provided volunteer specialty care in the month of February 2013 and your name is omitted.

During the month of February, the *We Care Network*:

- Received 52 referrals for new patients

- Scheduled 118 appointments with volunteer physicians and dentists

- \$47,971 in donated care was reported by *We Care* volunteers

"In healthcare, the security of patient information is critical. Shred-it gets it."

Shred-it document destruction services can help you meet your compliance obligations. We can help you prevent identity theft and security breaches, and safeguard your patients' privacy.

Schedule your Free Security Assessment
Call Shred-it today.
850.309.1996
shredit.com



Making sure it's secure.™

*Limited time offer.
Call for details.



**CAPITAL MEDICAL
SOCIETY**

Cap Scan Newsletter
1204 Miccosukee Road
Tallahassee, FL 32308

Return Service Requested

**PRST STD
U.S. Postage
PAID
Tallahassee, FL
Permit NO. 551**

We do what no other medical malpractice insurer does. We reward loyalty at a level that is entirely unmatched. We honor years spent practicing good medicine with the Tribute® Plan. We salute a great career with an unrivaled monetary award. We give a standing ovation. We are your biggest fans. We are The Doctors Company.

We created the Tribute Plan to provide doctors with more than just a little gratitude for a career spent practicing good medicine. Now, the Tribute Plan has reached its five-year anniversary, and over 28,000 member physicians have qualified for a monetary award when they retire from the practice of medicine. More than 1,900 Tribute awards have already been distributed. So if you want an insurer that's just as committed to honoring your career as it is to relentlessly defending your reputation, request more information today. Call (800) 741-3742 or visit www.thedoctors.com/tribute.



www.thedoctors.com

Tribute Plan projections are not a forecast of future events or a guarantee of future balance amounts. For additional details, see www.thedoctors.com/tribute.