



CAP SCAN

A CAPITAL MEDICAL SOCIETY PUBLICATION

NOVEMBER EDITION, VOLUME 2013, NO. 11

THE BEST PARTY OF THE YEAR IS GOING HI-TECH

BY SUE CONTE, CMS EXECUTIVE DIRECTOR

We listened to your feedback from last year and we are working to make this year's Holiday Auction better than ever! The event will be held at the Florida State University Center Club Ballroom which gives us 3,000 square feet more space than we had last year – along with more seating, better acoustics and separation between the Silent and Live Auctions. Thanks to a sponsorship from EMTeLink (www.emtelink.com), the Silent Auction will feature electronic bidding on mobile bidding devices – with fun and easy features. Watch for our announcements allowing you to preview auction items and begin bidding on-line! In addition, several of this year's scholarship recipients have volunteered to help with logistics and with the Live Auction.

The Holiday Auction is your opportunity to support the charitable efforts of your CMS Foundation. These include sponsorships for medical students who are burdened with the enormous cost of medical school. A recent recipient said it best in a note: "After receiving this award, I feel as though the


financial burden has become a little lighter and a little more bearable. I will use this award as additional motivation to work hard and become the best doctor I can be." Proceeds from the Auction also go to support the We Care Network and other efforts promoting access to care in our community.

We need your help to make this a successful fundraiser. Please consider donating an item. All items, large or small, are welcome. We are hoping for a wide variety of items this year.

There are other ways to help with the Holiday Auction, too!

1. PLAN TO ATTEND! Mark the Holiday Auction on your calendar. We want everyone to attend. The Auction is December 5th at 6:30 pm at the new location – University Center Club at FSU (1 Champions Way – Doak Campbell Stadium). The entrance donation is \$100 per couple.

2. BE AN INDIVIDUAL SPONSOR. Write a check for \$100 or more to help with the Auction. We will publish the names of our individual sponsors in our marketing materials.

If you have donations, questions, or an idea for an item, please call the CMS office at (850) 877-9018 or email Rosalie at rcarlin@capmed.org, Shannon at sboyle@capmed.org, or Sue at sconte@capmed.org. 



CAPITAL MEDICAL SOCIETY 2013 MEETINGS CALENDAR

■ *NOV. 19, 2013 @ 6 PM
"CANCER GENETICS: THE FAST-MOVING FIELD OF GENETIC TESTING AND ITS IMPACT ON CLINICAL PRACTICE"
L. Kristin Parsley, M.D., FAAP, FACMG

DEC. 5, 2013 @ 6:30 PM
CMS FOUNDATION HOLIDAY AUCTION
Location: Florida State University Center Club
Doak Campbell Stadium

*INDICATES IT IS A CMS MEMBERSHIP & CME MEETING

■ INDICATES THE MEETING WILL BE HELD AT THE MAGUIRE CENTER FOR LIFELONG LEARNING AT WESTMINSTER OAKS



CAPITAL MEDICAL SOCIETY

**MISSION: TO PROMOTE THE PRACTICE OF
MEDICINE FOR THE ULTIMATE BENEFIT
OF THE PATIENT.**

(850) 877-9018 Fax: (850) 878-0218
www.capmed.org

BOARD OF GOVERNORS

Nancy Loeffler, M.D., President
Alfredo Paredes, M.D., President Elect
Joshua Somerset, M.D., Secretary/Treasurer
Hugh VanLandingham, M.D., Immediate Past-President
Robert Chapman, M.D.
Garrett Chumney, M.D.
Tracey Hellgren, M.D.
Kelly Hutchinson, CMS Alliance President
Marc Inglese, M.D.
Vikki McKinnie, M.D.
Hector Mejia, M.D.
Margaret Havens Neal, M.D.
J. Daniell Rackley, M.D.
Timothy Sweeney, M.D.
Sue Conte, Executive Director
Family Medicine Residents
David Castillo, M.D. / William Carlson, M.D.
Internal Medicine Residents
Ajoke Bamisile, M.D. / Brittany Clark, M.D.

PUBLICATION

EDITOR

Charles E. Moore, M.D.,



MANAGING EDITOR

Shannon Boyle

GRAPHIC DESIGN

Lynne Takacs

ARE YOU INTERESTED IN WRITING AN ARTICLE FOR CAP SCAN?

Please contact Dr. Charles Moore at
cmoore5186@aol.com and Shannon Boyle at
sboyle@capmed.org. All articles submitted will
be reviewed by your peers prior to publishing.

Cap Scan is published during the first week of each month and is the official publication of the Capital Medical Society. Advertising in Cap Scan does not imply approval or endorsement by the Capital Medical Society. The opinions expressed are those of the individual authors and do not necessarily reflect the official policies of the Capital Medical Society.

If you are a member of the Capital Medical Society and would like a copy of the Minutes from the Board of Governors meeting, please call the CMS office. Thank you.

IN THIS ISSUE:

CMSF HOLIDAY AUCTION GOES HI-TECH	1
NOVEMBER BIRTHDAYS	2
CMS WELCOMES NEW MEMBERS	3
LUNCH & LEARN RECAP	4
REMAINING FALL LUNCH & LEARN	5
BYLAWS CHANGE NOTICE	6
2014 MEMBER DIRECTORY ANNOUNCEMENT	7
REFLECTIONS FROM THE EDITOR	9
CMS FOUNDATION	13
CMS FOUNDATION: WE CARE NETWORK	14
2012-13 CMS FOUNDATION ANNUAL REPORT	15
CMS MEMBERSHIP MEETING MINUTES	16



HAPPY BIRTHDAY!

{NOVEMBER BIRTHDAYS}

PAUL ARONS, M.D. - 12TH
MAGGIE BLACKBURN, M.D. - 20TH
ANGELA BOOKOUT, D.O. - 15TH
ALEXANDER J. BRICKLER, III, M.D. - 17TH
VIET BUI, M.D. - 2ND
AL DEEB, M.D. - 22ND
AVON DOLL, M.D. - 17TH
DAVID DRAPER, M.D. - 11TH
T. BERT FLETCHER, JR, M.D. - 25TH
JOSEPH GRAY, M.D. - 6TH
W. HARRIS GREEN, M.D. - 8TH
MUHANAD HASAN, M.D. - 6TH
CARLA HOLLOMAN, D.O. - 25TH
GINA HOPE, M.D. - 7TH
WILLIAM KEPPEL, M.D. - 30TH
THOMAS LAWHORN, M.D. - 2ND

VALERIE LAZZELL, M.D. - 29TH
PETER LOEB, M.D. - 8TH
MICHAEL MANGAN, M.D. - 27TH
ALBERT MENDUNI, M.D. - 29TH
KRISTI REESE, M.D. - 26TH
CHRISTIE SAIN, M.D. - 22ND
FRANCIS SKILLING, M.D. - 2ND
ROBERT SNIDER, M.D. - 15TH
CYNEETHA STRONG, M.D. - 10TH
DAVID TEDRICK, M.D. - 4TH
JEAN-PAUL TRAN, M.D. - 20TH
RAVI UBRIANI, M.D. - 11TH
ERNESTO UMANA, M.D. - 2ND
D.J. UNDERWOOD, M.D. - 22ND
LEONARD WALDENBERGER, M.D. - 8TH

HAPPY BIRTHDAY! WE ARE SO GLAD YOU WERE BORN!

CAPITAL MEDICAL SOCIETY IS PLEASED TO WELCOME THE FOLLOWING

NEW MEMBERS:**JOEDRECKA BROWN, M.D.**

Medical School: Emory University (1998)
Internship/Residency: St. Vincent's Family Medicine Residency, Jacksonville, FL
Specialty: Family Medicine
Fellowship: PCC Community Wellness Center Maternal Child Health Fellowship, Oak Park, Illinois
Practice: Associate Professor, FSU College of Medicine

**LEO "CHRIS" DEROSIER, M.D.**

Medical School: University of Alabama (2002)
Internship/Residency: University of Alabama
Fellowship: University of Alabama
Specialty: Plastic Surgery
Practice: Southeastern Plastic Surgery, 2030 Fleischmann Road

**SUMA DONDAPATI, M.D.**

Medical School: Lady Hardinge Medical College, New Delhi India (2005)
Internship: Lady Hardinge Medical College, New Delhi India
Residency: Erie County Medical Center, Buffalo, NY
Specialty: Internal Medicine
Practice: Capital Health Plan, 1491 Governors Square Boulevard

HENRY GUNTER, M.D.

Medical School: University of Miami (1980)
Internship/Residency: TMH Family Medicine Residency Program
Specialty: Family Medicine
Practice: Capital Health Plan, 2140 Centerville Place

**INGRID JONES-INCE, M.D.**

Medical School: University of the West Indies, Jamaica, WI (2000)
Internship/Residency: Harlem Hospital Center, NYC
Specialty: Internal Medicine
Practice: Tallahassee Memorial Family Medicine - Perry, 1706 S. Jefferson Street

**T. ADAM OLIVER, M.D.**

Medical School: Louisiana State University (2006)
Internship/Residency: University of Tennessee
Fellowship: Capital Health Institute for Neuroscience, Trenton, NJ
Specialty: Neurosurgery
Practice: Tallahassee Neurological Clinic, 1401 Centerville Road, Suite 300

**ANDRA PRUM, D.O.**

Medical School: Western University of Health Services, Pomona, CA (2001)
Internship: St. Joseph's Hospital, Phoenix, AZ
Residency: University of Nevada, School of Medicine Las Vegas Family Medicine Residency
Specialty: Family Medicine
Practice: Assistant Medical Director, University Health Sciences Services, FSU; Adjunct Associate Professor, FSU College of Medicine

NEW TALLAHASSEE MEMORIAL FAMILY MEDICINE RESIDENCY MEMBERS:**SHAMIL CORPS, M.D.**

St. Matthew's University School of Medicine

CORY DUNCAN, M.D.

Florida State University College of Medicine

**ANNA HACKENBERG, M.D.**

American University of the Caribbean School of Medicine

JONATHAN NAVA, M.D.

Ross University School of Medicine

**SAVITRI RAMDIAL, M.D.**

The University of the West Indies

AMY REJAIAN, M.D.

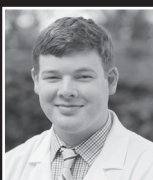
American University of the Caribbean School of Medicine

**SAMUEL ROSS, M.D.**

St. George's University School of Medicine

TAMARA SEALY, M.D.

The University of the West Indies

**NATHAN STUCKEY, M.D.**

University of South Alabama College of Medicine

PHILIP VEREL, M.D.

Ross University School of Medicine

**JILLIAN WEISSMAN, M.D.**

St. George's University School of Medicine

LUNCH & LEARN

A SERVICE FOR ALL CMS MEMBER OFFICES!

On October 16th, Bert Mitchell, Regional Trainer/Facilitator with Workforce Plus, gave an excellent program on "Team Building, Mentoring, Coaching: Skills for Supervisors". You can reach Mr. Mitchell at (850) 617-4505 or bert.mitchell@wfplus.org.

Professional Medical Insurance Services, Inc. (PMIS) sponsored the October 16th Lunch and Learn. PMIS is a national boutique brokerage, risk management and consulting firm that specializes in providing insurance solutions to all sectors of the healthcare industry. Julie Shumer, Senior Vice President Southeast Division, was in attendance as a representative of PMIS. You can reach Ms. Shumer at (904) 607-2961 or jshumer@pmis.com.

This seminar was held at the Capital Health Plan on Governor's Square Blvd – and we thank them for providing this lovely venue. **CMS**



ABOVE - OUR SPEAKER WITH WORKFORCE PLUS, BERT MITCHELL.



RIGHT - OUR SPONSOR WITH PROFESSIONAL MEDICAL INSURANCE SERVICES, INC. (PMIS), JULIE SUMER.



The best party of the year has moved again!
Mark Your Calendar for the

C M S F O U N D A T I O N

Holiday Auction

THURSDAY, DECEMBER 5, 2013 AT 6:30 PM

NEW LOCATION
University Center Club at Florida State University
1 Champions Way (Doak Campbell Stadium)

**MORE SPACE + BETTER ACOUSTICS + GREAT FOOD =
THE BEST AUCTION EVER!**

Kick off the holiday season, enjoy a fun evening with friends, and get your holiday shopping done early – jewelry, original artwork, autographed sports memorabilia, gift certificates, and much more!

Call CMS at 877-9018 if you have an item to donate for the auction.
We are happy to answer any questions & arrange for pick up!
Proceeds benefit all programs of the CMS Foundation.

**BE ON THE LOOKOUT FOR YOUR INVITATION IN THE MAIL AND
RSVP BY NOVEMBER 25TH**

MARK YOUR CALENDAR FOR THE REMAINING LUNCH & LEARN SEMINAR FOR FALL 2013

NOVEMBER 20

HIPAA/SECURITY RISK ASSESSMENT

Speaker: Larry Allen, Director of IT Services,
The Center for the Advancement of Health IT

What are your options for conducting a Security Risk Assessment (SRA), the importance of implementing security updates, and correcting security deficiencies as part of a comprehensive risk management process? Actively safeguarding patient health information, meeting HIPAA compliance and Meaningful Use requirements, and ensuring an audit-ready status; healthcare providers across our network are rapidly increasing and benefiting from their use of Electronic Health Records (EHRs). We will review the January HIPAA Final Omnibus Rule and why SRA's are important. Join us as we share from our experiences with collaborative SRA engagements with your healthcare colleagues, including budgetary approaches, identifying common risks, and utilizations of policy templates. Learn how your practice can have a Security Risk Assessment comfortably and affordably.

Sponsor: CopyFax - Debra Summers

TIME: 12 NOON TO 1:30 PM (SEMINAR STARTS AT 12:30 PM)

PLACE: CHP AUDITORIUM, 2ND FLOOR
1491 GOVERNORS SQUARE BOULEVARD

FOR MORE INFORMATION OR TO RSVP FOR THE LUNCH & LEARN,
CALL ROSALIE CARLIN AT 877-9018.

PUT CMS IN THE PALM OF YOUR HAND

DOWNLOAD OUR FREE APP TODAY.
RSVP to events and meetings with ease.
Contact us via email or
phone with the press
of a button. Check the
CMS Calendar or find
contact information
for your colleagues.



Scan the QR Code below
with your Smart Phone or iPad to
instantly download our App:



Or search "Capital Medical Society"
in the App store.

HARD DRIVE DESTRUCTION DONE RIGHT - ON SITE

SCHEDULE YOUR FREE SECURITY ASSESSMENT.



WE FOLLOW NAID PROCEDURES
FOR ON-SITE HARD DRIVE
DESTRUCTION

Contact Shred-It Today!
850-309-1996

BYLAWS CHANGE NOTICE

The Board of Governors has reviewed the CMS Bylaws. Currently, there are seven (7) standing committees required, with chairs appointed each year by the President:

- (1) Continuing Medical Education
- (2) Physician/Patient Relations
- (3) Public Information
- (4) Legislative Affairs
- (5) Membership
- (6) Publications
- (7) Physician Recovery Network


All other committees will be appointed by the President and approved by the Board of Governors.

Membership associations across the country are streamlining their organizations to meet the more immediate and changing needs of their membership. Since four of the committees named in our Bylaws are generally inactive, the Board is recommending that the Bylaws be updated to retain the following three as required standing Committees:

- (1) Continuing Medical Education
- (2) Membership
- (3) Publications

The Board further recommends the following change:

- (1) **The Physician/Patient Relations, Public Information, Legislative Affairs, Physician Recovery Network and** all other committees will be appointed by the President and approved by the Board of Governors **as needed for a specified project or time-period as determined by the Board.**

These changes will be voted on in the November general membership meeting. If any CMS member wishes to view the current Bylaws and the wording changes before then, please contact Sue Conte at sconte@capmed.org or 877-9018. 

MANAGING EDITOR'S NOTE: The Capital Medical Society is working on producing the first-ever pictorial directory of CMS members. We have contracted with E&M Consulting, Inc. to produce the directory – and they will be selling advertising to cover the cost. If you are interested in advertising in the directory, please see the flyer on the next page. This directory will have your contact information and photo. If you have a recent, high quality head-shot photo, please send it to Shannon Boyle at sboyle@capmed.org. We think this directory will become an indispensable tool for physicians and their staff.

To:



Announcing the first ever 2014 Capital Medical Society Membership Directory!

The directory will be an indispensable tool for all members. Don't miss out on an entire year's advertising to CMS members and the opportunity to stand out by advertising or enhancing your practice listing!

Advertising Rates:

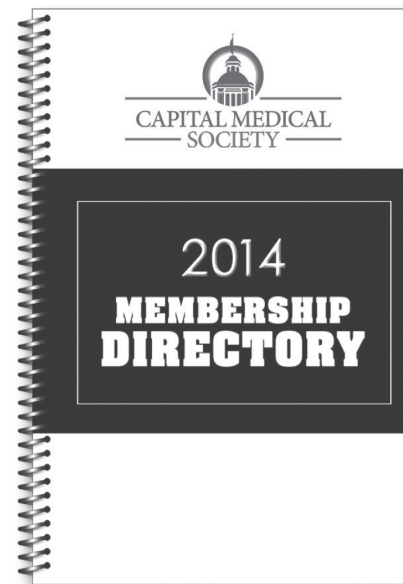
Premium Ad Spots	B&W	Color
Back Cover	n/a	\$1,799
Inside Front Cover	n/a	\$1,699
Inside Back Cover	n/a	\$1,599
Facing Page to Inside Covers	n/a	\$1,499
Full Page Divider	n/a	\$1,099
1/2 Page Divider	n/a	\$799
Additional Ad Spots	B&W	Color
Full Page	\$799	\$999
1/2 Page	\$599	\$799
1/4 Page	\$399	\$499
Business Card	\$199	\$299
1/8 Page	\$199	\$249

Enhanced Listing	Price
Boxed Listing	\$79
Shaded Box Listing	\$129
Boxed Listing with Logo	\$199

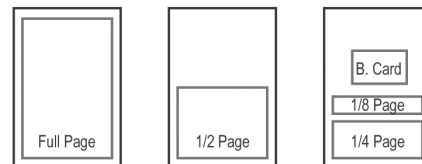
Need help designing your advertisement?
Our Award-Winning graphics team can help!

- ☐ Yes, please have a designer contact me.
☐ No, I will submit our own artwork.

2014 Capital Medical Society Membership Directory



5.5" x 8.5" Publication



Space Reservation Form

fax to 952-448-9928
or reply directly to email

Please fill/type out information below and include ad size from table at left. E&M will send you the required ad contract, along with ad creation information.

Company: _____

Contact: _____

Phone: _____

Fax: _____

Email: _____

Ad Size: _____ ☐ Color ☐ B&W

If you have any questions or to reserve ad space, please contact your E&M representative Mike at
mike@emconsultinginc.com
at 800-572-0011 or 850-270-6301.

To opt-out of future communications, please contact 800-572-0011 or email emconsulting.optouts@gmail.com

(please include your company name and the title of the publication)

Such requests will be honored within a reasonable time from the date of the request.



Physician Mortgage Program

Whether you are purchasing a new home or refinancing an existing one, our Physician Mortgage Program is designed to meet your needs. We offer fixed and adjustable rate mortgages to eligible physicians and the opportunity to obtain 100% financing.

BENEFITS

- No down payment required
- No Private Mortgage Insurance (PMI) required
- Flexible and streamlined processing

HOW IT WORKS

- Financing¹ up to \$1 million on a primary residence loan
- 100% Loan-to-Value (LTV)²
- Purchase or refinance³



Eligible Physicians:

Physicians (MD, DO, DDS and DMD) in residency or in practice less than 10 years that have their primary relationship with Synovus.

FOR MORE INFORMATION

Ben Graybar

Commercial Banker
Office: (850) 205-5168
bengraybar@talstatebank.com

Greg Nichols

Commercial Banker
Office: (850) 205-5172
gregnichols@talstatebank.com

When it comes to purchasing or refinancing a home³, you have options.

1 Subject to credit approval 2 Property appraisal required 3 Primary residence only



Tallahassee State Bank is a division of Synovus Bank. Synovus Bank, Member FDIC, is chartered in the state of Georgia and operates under multiple trade names across the Southeast. Divisions of Synovus Bank are not separately FDIC-insured banks. The FDIC coverage extended to deposit customers is that of one insured bank.



Ask a Banker Today



www.talstatebank.com



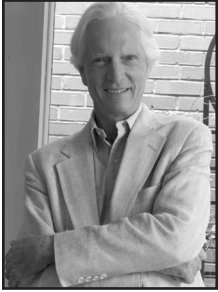
(850) 576-1182



info@talstatebank.com

Tallahassee State Bank

a division of **SYNOVUS[®] BANK**
MEMBER FDIC



THE ISN'T OF IZ

By Charles Moore, M.D.

I mean, of course, by "Iz" that very "Is" made famous by President Clinton when once he was. As a good-old-boy-Rhodes-scholar-President, with such a powerful woman-wife so stalwartly at his side, no matter whom or what, was he not the veritable Philosopher-King that Plato yearned we should have? After all, no philosopher has ever asked a richer question than "what is 'is?'" But prompted now by his example, let me presume to refine more explicitly the definition of "is" to include, as Mr. Clinton so carefully did not, the isn't that is such a big part of "is." We thus arrive at the more specific definition of "Iz," which is, ipso facto, "the isn't of 'is', the isn't that is embedded and lurking in whatever we think 'is' is." I think you've got it, surely.

But I am way ahead of myself.

Thank goodness, after all, that what we sometimes think is, isn't. For example, we had gone to see a film one evening, and emerged into the impenetrable darkness of a moonless night. We got in the car, my old Explorer. I turned on the engine. I looked behind as best my neck will turn, and glanced into the mystery of the rear view mirrors. Nothing. Pitch black. I put the car into gear and backed up, expecting nothing, but instead almost immediately felt what was a very soft, noiseless thump. I put on the brakes, and grew pale.

"My dear," I whispered, "I think I have just run over a small child."

We got out, and went to look for the small child, hoping we might apologize for its death and destruction. Instead, we found I had ever so softly backed into a tiny, black, invisible

automobile containing an FSU student. I had lightly dented the door on the passenger side of his car. I was, to put it honestly enough, thrilled it had not been a "small child" after all. The "is" wasn't. To make a long story short, I said I would have his car fixed immediately, which I did out of pocket (\$600.00 or so, for who is it who wants to confess such an accident to their insurance company), and took the FSU student out to lunch. I learned his life story and, as a sort of crowning glory, was informed by him that two weeks after his door had been replaced he had utterly totaled the car in some minor accident. So much for the dent door that was, and then suddenly wasn't.

It was a delightful luncheon, and in a small way demonstrated to me the point above alluded to, namely that what we often think is, isn't. We physicians, of course, count on statistics, basically calculated within a complex formula that states "if for the most part X happens when we perform Y modulated by the Z factor of our own expertise and experience divided by the variables of our mood at a given moment, factoring in, naturally, wind speed and the ambient temperature index,

CONTINUED ON PAGE 10



Specializing in the representation of

BUYERS & SELLERS

of Premier Properties
from Destin to 30A

BUY • SELL • BUILD

Teresa
TURNER
REAL ESTATE DONE RIGHT

Realtor & Broker - Associate
The Premier Property Group
(850) 933-7899
www.TeresaTurnerRealtor.com
f/TeresaTurnerRealty @teresaturner

"THE ISN'T OF IZ" CONTINUED FROM PAGE 9

we have a 93% chance of obtaining 83% of a cure." We are more sophisticated in our capacity to render these equations given our evidence based studies, but in essence it is exactly the same thing as was reported in the Ebers Papyrus back in 1550 B.C. Then the Egyptian physician would, having done his own sums, say, "this is a case I will take (or not)."

Who really knows what is to be the outcome of anything? In my own bit of experience the worst "case" I ever had involved a superficial injury to a child, requiring only a few stitches, who six hours afterwards died. And then there was the lady on whom I performed a relatively straightforward bit of out-patient facial surgery, whose husband called me in the middle of the night to say he thought she might be dead. I raced to her home with 911 at my heels and found, indeed, that she was. A ruptured cerebral aneurysm no one knew she had possessed. After such experiences one wonders, for

a little while, just how much faith you can put in statistics. They are a good example of what is that isn't.

By which introduction I arrive at (yes, bear up!) "The Affordable Health Care Act," It is certainly an "Is," passed by some miracle by both houses of Congress, and beyond that given the weighty imprimatur of our Supreme Court. Far be it from me to analyze our nation's fragile, even brittle ability to make this ponderous scheme work, or for that matter even to get everyone actually insured. At two thousand and whatever more pages, it is a document that certainly IS. It seems, however, to be burdened by a great deal of "isn't," at least according to those who believe they know what is. The screeching it has prompted is, of course, its own "is," and has rendered our government itself, as I write this, crippled, aside from the other issue of our "debt ceiling." Not to pontificate, and do forgive the non sequitur, but It is as though we, who

CONTINUED ON NEXT PAGE



Refinance your auto loan with us and get

1%* Cash Back

plus we will pay the lien fee!

YOUR Healthcare Credit Union

850.402.5301 • www.tmhfcu.org



*Bonus cash is 1% of the new principal loan balance with TMH FCU. Does not apply to existing TMH FCU loans. Total amount financed must be greater than \$10,000. If loan is paid off within 12 calendar months amount paid to member will be added to loan payoff total.



Federally Insured by NCUA



Defending southeast physicians for more than 30 years



MagMutual®

Good medicine deserves the best defense

MagMutual.com

These agents are experts on the products and services MagMutual offers in Florida.

Staige Hoffman
MagMutual
800-741-0611

Don McMahon
McMahon & Hadder
850-484-7011

We invest our financial strength in you

- Consistent dividends*
- The best Florida attorneys
- Florida peer physician claims review
- Industry leading Patient Safety
- Owners Circle® rewards program
- Doctor2Doctor® peer support

Medical malpractice insurance for Florida physicians

* Dividend payments are declared at the discretion of the MAG Mutual Insurance Company Board of Directors. Since inception, MAG Mutual Insurance Company has distributed more than \$120 million in dividends to our policyholders.
Insurance products and services are issued and underwritten by MAG Mutual Insurance Company and its affiliates.

have been granted so much as a nation, suddenly cannot bear ourselves, and have decided to put a gun to our Federal head.

Look, I am no great student of history, and less of the history of history, Toynbee, Macaulay, Gibbon and that lot, who have so brilliantly attempted to describe the means by which nations rise and fall, the means by which we “march” forward into the future. Being thus poorly informed, I am perfectly happy to announce my own theory, which is that no one, or nation, ever “marches” into any future, banners flying, but instead staggers into it, ad hoc, willy-nilly, buoyed up only by hope, which, as Emily Dickinson put it, “is a thing with feathers.” Visionaries, Religions, and Philosopher-Kings may project their certainties upon us, preaching their versions of “is” that become “isms,” and none of which will come to pass because of the contradictions that lie lurking within every ideal. Even without being an historian one can rattle off innumerable examples: for example (and you

can think of your own hundreds more while idly watching clouds):

Brutus thought that by killing Caesar the Republic would be restored, but instead got a train of Emperors among whom was Caligula; the great Roman Empire, all powerful and reasonably content with its merry variety of Gods was ultimately overthrown by a small sect of uncompromising people, who did not want to pay taxes; Columbus, who set bravely forth for the Spice Islands and bumped into a whole continent, leading from thence to an extraordinary revision of the current world view, aside from some genocide; the French Revolution, determined on “Liberty, Equality, and Fraternity,” but ending up by cutting off the heads of its more enlightened citizenry, including physicians, and releasing Napoleon onto Europe; the 1914 shooting of the Archduke in Sarajevo, an innocent (relatively speaking)

CONTINUED ON PAGE 12

"THE ISN'T OF IZ" CONTINUED FROM PAGE 11

little bullet that led to four years of slaughter, followed by a world of bitterness and, of course, Hitler; not to forget the Russian Revolution, preaching that the workers of the world could unite and march into the future, their flags waving, but instead resulted in even more slaughter than Hitler contrived. And so on. Compared to all that, our present congressional impasse is slim pickin's, but, to give them credit where credit is due, they have brought us, so say those who know what "is" is, to the pathetic brink of what no Congress has ever broached before.

We live in the very midst of a "Gordian Knot," an Iz we will never untangle, for who can certainly know what is or isn't, was or wasn't, or what could be. As physicians, who among us has ever predicted with perfect accuracy the outcome of

our every intervention. At least, by the time you read this we will know if our government is functioning once again, more or less, for a while, and so, hope and feathers flying, stagger into the next future.

Hurrah! Good luck! **CMS**



Office **850.222.9777**
Fax **850.222.3291**

- DOH approved vendor for counterfeit proof prescription pads and blanks.
- New medical CMS-1500 forms approved by NUCC & OMB, now available.
- Meet all HIPAA compliance and obligations for your printing requirements.
- Medical forms and superbills printer to health providers.
- Secured direct mail for confidential client lists.

Free Delivery and Pickup • Your One Stop Printing & Mailing Solution

927 North Monroe Street • Tallahassee, Florida 32303
sales@iprintquick.com • www.iprintquick.com

Medical/Office Building For Lease!

1841 Fiddler Court, Tallahassee, FL 32308
One block from Capital Regional Medical Center



- Availability: 2,218 SF +/-
- Complete renovation (2013)
- 5 offices plus lab
- Open reception area
- Large waiting room
- Upstairs flex space

LEASE RATE: \$2,250/Month
(plus utilities & sales tax)

STRUCTURE Commercial Real Estate | 249 Pinewood Drive | Tallahassee, FL 32303
Henry Adams | P: 850.656.6555 | F: 850.656.6582 | www.structureIQ.net

This information is believed to be accurate and should be independently verified.



DONATE TO THE CMS FOUNDATION WE THANK OUR DONORS

WE THANK THE FOLLOWING PEOPLE WHO MADE A DONATION
TO THE CMS FOUNDATION LAST MONTH:

FOR THE WE CARE NETWORK:
FRANCES O. DWYER

The mission of the Capital Medical Society Foundation is to support the charitable efforts of physicians and others, increase access to healthcare, promote education and serve the community's health needs through innovative projects that are exemplary, affordable and dignified.

REASONS TO DONATE

You can make a donation to the CMS Foundation in memory of someone who has passed away or you can make a donation in honor of someone, such as a fellow physician you hold in high esteem or has taken care of you or your family. CMS will send a letter to those you honor.

ENDOWMENT FUNDS

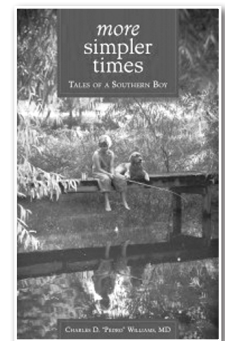
CMS Foundation has created three endowment funds in order to establish long-term financial stability to meet our mission. You can donate at any time to one of the CMS Foundation's Endowment Funds. 1) The General Endowment Fund 2) The We Care Network Endowment Fund 3) The Scholarship Endowment Fund

Checks should be made out to the CMS Foundation and indicate on the "For line" which Fund you are donating to. Bring your check to the CMS Office or mail it: Capital Medical Society ~ 1204 Miccosukee Road ~ Tallahassee, FL 32308.

How to Buy Dr. Williams' More Simpler Times

By Shannon Boyle

We are very grateful to Dr. Charles Williams that he has decided to donate to the We Care Network, proceeds from the sales of his new book and sequel, More Simpler Times.



The cost is \$20 per book.

You can buy copies of the book at:

- The CMS office - 1204 Miccosukee Road
- The Gift Shop at Capital Regional Medical Center
- The Gift Shop at Tallahassee Memorial Hospital
- Tallahassee Nurseries - 2911 Thomasville Road
- My Favorite Things - 1410 Market Street, B2
- Feathered Pony Boutique - 2522 Capital Circle NE, #3

CHECKS SHOULD BE MADE
OUT TO: CMS FOUNDATION.
THIS MEANS YOU ARE
MAKING A TAX-DEDUCTIBLE
DONATION TO YOUR CMS
FOUNDATION.





THANK YOU!

TO OUR CMS MEMBERS AND WE CARE PARTNERS WHO SAW NEW PATIENTS FOR THE WE CARE NETWORK IN SEPTEMBER 2013. YOUR GENEROSITY AND SUPPORT OF THE WE CARE NETWORK MAKES A DIFFERENCE.

PHYSICIANS

Greg Albright, D.O.
Emily Ashmore, M.D.
Marie Becker, M.D.
Viet Bui, M.D.
Carlos Campo, M.D.
Michael Cavallaro, M.D.
Raymond Cottrell, M.D.
Jeffrey Crooms, M.D.
J. Daniel Davis, Jr., M.D.
Ray Dolly, M.D.
David Durden, M.D.
Alberto Fernandez, M.D.
Jeffrey Ferraro, M.D.
Michael Ford, M.D.
Tameka Funny, D.O.
Joshua Fuhrmeister, M.D.
Sergio Ginaldi, M.D.
Larry Harper, M.D.
Celeste Hart, M.D.
Muhanad Hasan, M.D.
Robert Hoyne, M.D.
Okanta Jackson, M.D.
Amit Jain, M.D.
Arjun Kaji, M.D.
Ken Kato, M.D.

John Katopodis, M.D.
James Killius, M.D.
Amulya Konda, M.D.
Kathy Langston, M.D.
Maribel Lockwood, M.D.
Kurt Luhmann, M.D.
John Mahoney, M.D.
Meredith McKinney, M.D.
Steven Ostrov, M.D.
Timothy Paulk, M.D.
Michael Pentaleri, M.D.
Luz Prieto-Sanchez, M.D.
J. Daniell Rackley, M.D.
James Renehan, M.D.
Adrian Roberts, M.D.
Andres Rodriguez, M.D.
William Paul Sawyer, M.D.
Brence Sell, M.D.
Scott Sellinger, M.D.
Philip Sharp, M.D.
Justin Simonds, M.D.
Hardeep Singh, M.D.
Robert Snyder, M.D.
Joshua Somerset, M.D.
Mary Swain, M.D.
Timothy Sweeney, M.D.

John Thabes, M.D.

Dale Wickstrum, M.D.
Charles Williams, M.D.
William Yaakob, M.D.
Samuel Yu, M.D.

DENTISTS

Eric Amundson, D.D.S.
Richard JP Bastien, D.M.D.
Brian Beck, D.M.D.
Ransey Boyd, D.M.D.
M. Darrh Bryant, D.M.D.
Susan Byrne, D.M.D.
Dennis Close, D.D.S.
Walter Colón, D.M.D.
Michael Hartley, D.M.D.
Eve James-Wilson, D.M.D.
William McFatter, D.D.S.
E. Lynn McLarty, D.D.S.
Jim McSoley, D.M.D.
Frank Swerdzewski, D.D.S.
James Sykes, D.M.D.
Jay Walton, D.D.S.
Lawrence Weaver, D.D.S.
Ed Zapert, D.M.D.

FACILITIES

Affordable Dentures
Anesthesiology Associates
Beachton Denture Clinic
Capital Regional Medical Center
Desloge Home Oxygen
Leon County Dental Clinic
Pathology Associates
Radiology Associates
Seven Hills Surgery Center
Southeastern Surgery Center
Tallahassee Diagnostic Imaging
Tallahassee Endoscopy Center
Tallahassee Health Imaging
Tallahassee Memorial HealthCare
Tallahassee Orthopedic and Sports Physical Therapy
Tallahassee Outpatient Surgery Center
TMH Family Medicine Residency Program
Women's Imaging Center HealthCare

PLEASE CONTACT ROSE MARIE WORLEY AT RWORLEY@CAPMED.ORG OR 201-0130 IF YOU ARE A WE CARE VOLUNTEER AND YOU PROVIDED VOLUNTEER SPECIALTY CARE IN THE MONTH OF SEPTEMBER 2013 AND YOUR NAME IS OMITTED.

DURING THE MONTH OF SEPTEMBER, THE WE CARE NETWORK:

Received 35 referrals for new patients

Scheduled 164 appointments with volunteer physicians and dentists

\$160,126 in donated care was reported by We Care volunteers

CMS Foundation Annual Report: 2012-2013

October 17, 2013

The mission of the Capital Medical Society Foundation is to support the charitable efforts of physicians and others, increase access to healthcare, promote education and serve the community's health needs through innovative projects that are exemplary, affordable and dignified.

Past Year Accomplishments:

1. We Care Network

- ◆ \$5,248,761 in donated specialty medical care by more than 300 physicians and 5 podiatrist volunteers along with the local hospitals and other health care providers
- ◆ 2,467 new patient referrals were made to *We Care*
- ◆ 3,110 patient visits were made to volunteer physicians
- ◆ To date, 237 *We Care* physicians have signed up for Sovereign Immunity

2. We Care Dental Network

A component of the *We Care Network*

- ◆ \$103,709 in donated dental care by more than 45 volunteer dentists
- ◆ 261 referrals were made to *We Care Dental*
- ◆ 169 patient visits were made to volunteer dentists
- ◆ Conducted 6 Dental Clinic Days at the Leon County Health Department with an average of 20 patients seen
- ◆ To date, 43 *We Care* dentists have signed up for Sovereign Immunity

3. Patient Assistance Fund

- ◆ Raised \$18,973
- ◆ \$6,000 donated by the Florida Dental Health Foundation
- ◆ \$9,423 donated by the Leon County Commission
- ◆ \$3,550 donated from The Ronald G. Pickett Memorial Fund for cancer patients
- ◆ \$18,852 spent providing medications, dentures, and transportation to *We Care* patients

4. More Simpler Times

- ◆ Dr. Charles Williams has donated proceeds to the *We Care Network* from the sale of his book, *More Simpler Times*
- ◆ To date, book sales and donations total \$12,808

5. Grants Awarded to Community Charities

- ◆ \$5,000 to Big Bend Hospice Bereavement Counseling
- ◆ \$5,000 to Big Bend Hospice Jean McCully Family House
- ◆ \$3,450 to Elder Care Services In-home Services Program

6. Holiday Auction

- ◆ *Holiday Auction's* net profit was \$56,987 – these proceeds benefit all of the CMS Foundation programs
- ◆ 159 local businesses and individuals donated items or sponsorships
- ◆ 20 physician groups were corporate sponsors

7. Scholarships

- ◆ \$32,500 in scholarships to seven 1st and 2nd year FSU medical students
- ◆ \$1,000 *Access to Care Award* presented to FSU-COM students, Melissa Velarde and Sarah Weaver

8. Endowment

- ◆ Grew the General Endowment Fund from \$202,851 to \$252,657
- ◆ Grew the Endowment Fund for the *We Care Network* from \$171,882 to \$234,228
- ◆ Grew the Scholarship Endowment Fund from \$45,615 to \$48,338

We appreciate grants from:

- ◆ American Express Members Give Program, Betty Ann Sturup
- ◆ Capital City Bank Group Foundation
- ◆ Capital Health Plan
- ◆ Commerce Credit Union
- ◆ Community Human Services Partnership (City of Tallahassee)
- ◆ Florida Dental Health Foundation
- ◆ Gadsden County Commission/Gadsden Community Health Council
- ◆ Jefferson County Health Department
- ◆ Leon County Commission
- ◆ Leon County Health Department
- ◆ Tallahassee Northside Rotary
- ◆ The Charles A. Frueauff Foundation
- ◆ The Perkins Charitable Foundation
- ◆ United Way of the Big Bend
- ◆ Wakulla County Commission
- ◆ Wakulla County Health Department

MINUTES

CMS MEMBERSHIP MEETING

October 15, 2013

Maguire Center for Lifelong Learning at Westminster Oaks

**THE MISSION OF THE CAPITAL MEDICAL SOCIETY IS TO PROMOTE
THE PRACTICE OF MEDICINE FOR THE ULTIMATE BENEFIT OF THE PATIENT.**

I. WE THANK OUR SUPPORTERS FOR THE MEETING:

TITLE SUPPORTER:

REGIONS BANK

Darrin Holloman, Tallahassee City President

Chris Mills, Relationship Manager

Darrell Fowler, Relationship Manager/Community
Banking Department

Tim Sheppard, Mortgage Sales Manager

Jim Monahan, Private Wealth Management

Carla Whitfield, Community Banking Sales Assistant

PRESENTING SUPPORTER:

ELLIS, GED & BODDEN, P.A.

Nicholas Zacharewski, Attorney

Carlos Mendoza, Business Development

Stephanie Moore, Business Development

MEETING SUPPORTERS:

MAG MUTUAL

Meredith Hines, Account Executive

MYOFFICEPRODUCTS

Carol Whitaker, Account Manager

WESTMINSTER OAKS

Don Wilson, Executive Director

Sheri Whigham, Sales & Marketing Director

II. BUSINESS MEETING – CAPITAL MEDICAL SOCIETY

A. WELCOME – Dr. Nancy Loeffler, President, called the meeting to order at 6:10 pm. She welcomed the Leon County Dental Association members in attendance.

B. NEW MEMBERS & GUESTS

a. Dr. Loeffler asked new CMS Members in attendance to introduce themselves:

Dr. Pooja Patel, Rheumatology, Tallahassee Primary
Care Associates.

C. DR. LOEFFLER ANNOUNCED SEVEN NEW MEMBERS APPROVED SINCE THE SEPTEMBER CME MEETING:

Dr. Ingrid Jones-Ince, TMH-Perry, Associate
Membership

CONTINUED ON NEXT PAGE



TITLE SUPPORTER, REGIONS BANK: (L-R) TIM SHEPPARD, JIM MONAHAN, DARRIN HOLLOMAN, RYAN JAMES, AND CARLA WHITFIELD.



REGIONS BANK RAFFLED OFF ONE OF THEIR GREEN BICYCLES AND THE WINNER WAS DR. MARJORIE KIRSCH.

Dr. Leo “Chris” DeRosier, Southeastern Plastic Surgery
 Dr. T. Adam Oliver, Tallahassee Neurological Clinic
 Dr. Suma S. Dondapati, Capital Health Plan
 Dr. Henry Gunter, Capital Health Plan
 Dr. Joedrecka Brown, FSU College of Medicine
 Dr. Andra Prum, FSU Student Health Center

D. DR. LOEFFLER MADE A FEW ANNOUNCEMENTS:

- a. CME for licensure renewal is now being tracked by an electronic system called CE Broker. The CMS staff can help with any questions.
- b. The We Care Network is now a United Way Certified Agency. Dr. Loeffler asked members to consider giving and holding a campaign in their office this year.
- c. CMS is working on producing the first-ever pictorial directory of CMS members. CMS has contracted with E&M Consulting, Inc. to produce the directory and they will sell advertisements to cover the cost.

E. UPCOMING EVENTS – MARK YOUR CALENDARS

Dr. Loeffler announced upcoming events:

NOVEMBER 15, 2013

Collaboration of the FSU Colleges of Medicine and Law; Anticipating and Responding to Public Health Emergencies: Balancing Society’s Interests and Individual Rights
 FSU College of Law – B.K. Roberts Hall

NOVEMBER 19, 2013

CMS Membership & CME Meeting

“Cancer Genetics: The Fast-Moving Field of Genetic Testing and its Impact on Clinical Practice”

L. Kristin Parsley, M.D., FAAP, FACMG

6:00 pm

Maguire Center for Lifelong Learning at Westminster Oaks

DECEMBER 5, 2013

CMS Foundation Holiday Auction

6:30 pm

University Center Club at Florida State University –

Note: NEW location

III. TONIGHT’S CME PROGRAM – THIS IS A 2 HOUR CATEGORY ONE PROGRAM

Topic: Prevention of Medical Errors

Speaker: Scott Sellinger, M.D., Southeastern Urological Clinic, P.A., and Jesse Suber, Esq., Henry, Buchanan, Hudson, Suber, & Carter, P.A.

Dr. Sellinger and Mr. Suber gave an excellent presentation on Prevention of Medical Errors.

Physician CME Proof of Attendance Forms will be sent to participants who attend the entire CME program.

IV. ADJOURN – Dr. Loeffler adjourned the meeting at 8:20 pm.

CONTINUED ON PAGE 18



PRESENTING SUPPORTER, ELLIS, GED & BODDEN, P.A.: (L-R) CARLOS MENDOZA, STEPHANIE MOORE, AND NICHOLAS ZACHAREWSKI.



MEETING SUPPORTER, MAGMUTUAL: MEREDITH HINES.

"CMS MEMBERSHIP MEETING" CONTINUED FROM PAGE 17

PLEASE THANK OUR
SPONSORS
FOR THE
OCT 15TH CMS
MEMBERSHIP MEETING

TITLE SUPPORTER



PRESENTING SUPPORTER

EllisGedBodden P.A.
ATTORNEYS AT LAW

MEETING SUPPORTERS



MyOfficeProducts

A HiTouch Company



MEETING SUPPORTER,
MYOFFICEPRODUCTS: CAROL
WHITAKER



THE TECH VOLUNTEERS AT
WESTMINSTER OAKS MAKE SURE OUR
MEETINGS RUN SMOOTHLY.



SPEAKER FOR THE EVENING,
MR. JESSE SUBER.



SPEAKER FOR THE EVENING, DR. SCOTT SELLINGER.



THE CMS WE CARE NETWORK IS NOW A
CERTIFIED UNITED WAY AGENCY.

We encourage our physicians and offices to consider
conducting a United Way Campaign this year.

Your donations will make a difference.



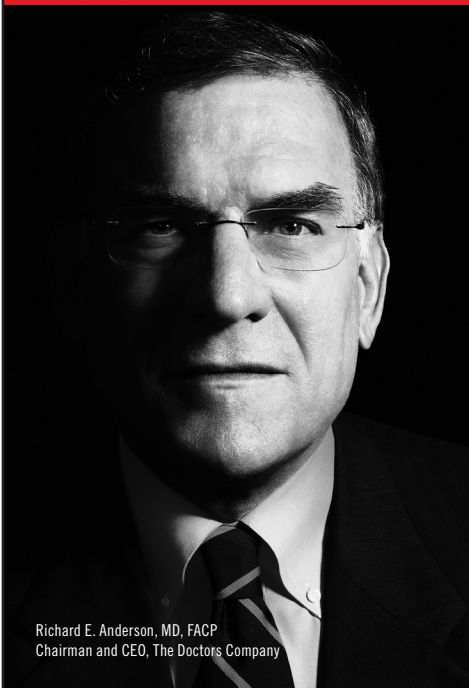


CAPITAL MEDICAL SOCIETY

Cap Scan Newsletter
1204 Miccosukee Road
Tallahassee, FL 32308

Return Service Requested

Why choose between national resources and local clout?



Richard E. Anderson, MD, FACP
Chairman and CEO, The Doctors Company

In Florida, The Doctors Company protects its members with **both**.

With 73,000 member physicians nationwide, we constantly monitor emerging trends and quickly respond with innovative solutions, like incorporating coverage for privacy breach and Medicare reviews into our core medical liability coverage.

Our nearly 14,700 Florida members also benefit from the significant local clout provided by long-standing relationships with the state's leading attorneys and expert witnesses, plus litigation training tailored to Florida's legal environment.

This uncompromising approach, combined with our Tribute® Plan that has already earmarked over \$34 million to Florida physicians, has made us the nation's largest physician-owned medical malpractice insurer.

To learn more, call our Jacksonville office at (800) 741-3742 or visit www.thedoctors.com.

*We relentlessly defend, protect, and reward
the practice of good medicine.*

Tribute Plan projections are not a forecast of future events or a guarantee of future balance amounts.
For additional details, see www.thedoctors.com/tribute.

